

COMMONLY CONFUSED

WITH MONARCH



Photo: Michel Tremblay

ADULT MONARCH
Danaus plexippus

9 to 11 cm.
Orange wings with black veins
and white-spotted edges.



Photo: André Sarrazin

MONARCH CATERPILLAR

Yellow, black and white stripes.
Black filaments at both ends
of the body.



Photo: Michael Gimelfarb

**BLACK SWALLOWTAIL
CATERPILLAR**

Papilio polyxenes

Green with black and yellow spots.
No filaments at the ends. Does not
feed on milkweed.



Photo: Dustin Minialoff

**MILKWEED TIGER MOTH
CATERPILLAR**

Euchaetes egle

They resemble milkweed caterpillars
in the first few days, but congregate
in groups. After a few days, their
bodies are covered in tufts of black,
white, brownish-orange and yellow
hair.



Photo: Maxim Larrivée

VICEROY
Limenitis archippus

Smaller than monarchs (7 to 8 cm).
Hindwings marked with a black line
running across the veins.

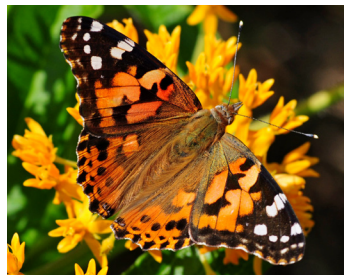


Photo: Maxim Larrivée

PAINTED LADY
Vanessa cardui

6 cm.
Various colours and complex
patterns on wings.



Photo: Maxim Larrivée

RED ADMIRAL
Vanessa atalanta

6 cm.
Various colours and no black
veins on wings.



Photo: Maxim Larrivée

**CANADIAN TIGER
SWALLOWTAIL**
Papilio canadensis

7 to 8 cm.
"Tails" on hindwings. Bright yellow
wings with black markings.



Photo: Maxim Larrivée

FRITILLARIES

6 to 8 cm.
Rounded wings dotted with
black spots.

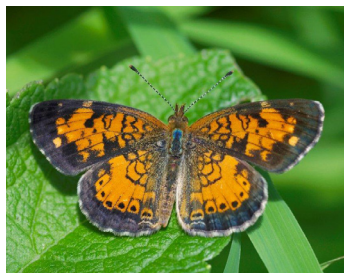


Photo: Maxim Larrivée

CHECKERSPOTS

Up to 4.5 cm.
Very wide black borders on upper
surface of wings, with dark spots
in the centre of the forewings.

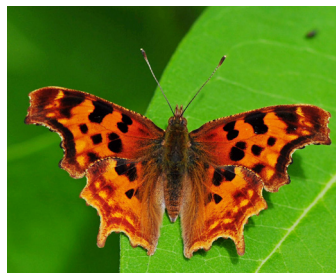


Photo: Maxim Larrivée

COMMAS

5 to 6.5 cm.
Irregular shape, lacy wings.

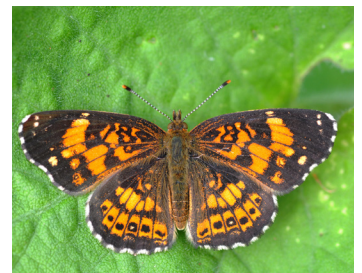


Photo: Maxim Larrivée

CRESCENTS

Less than 4 cm.
Rounded wings.